

Pearl-Collection

Metallic trends für die Architektur | Metallic powder coating trends for facades





PF1003FRA135
RAL 1035 PERLBEIGE



PF1003FRA213
RAL 2013 PERLORANGE



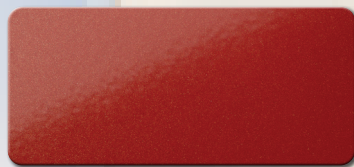
PF1003FRA136
RAL 1036 PERLGOLD SDGLZ.



PF1001FRA136
RAL 1036 PERLGOLD MATT



PF1003FRA332
RAL 3032 PERLROBINROT



PF1003FRA333
RAL 3033 PERLROSA



PF1003FRA829
RAL 8029 PERLKUPFER



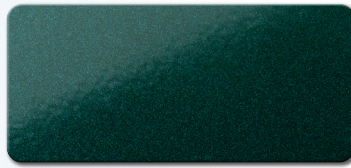
PF1003FRA411
RAL 4011 PERLVIOLETT



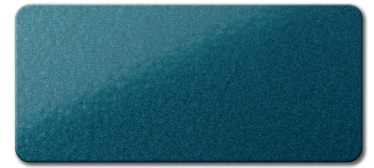
PF1003FRA412
RAL 4012 PERLBROMBEER



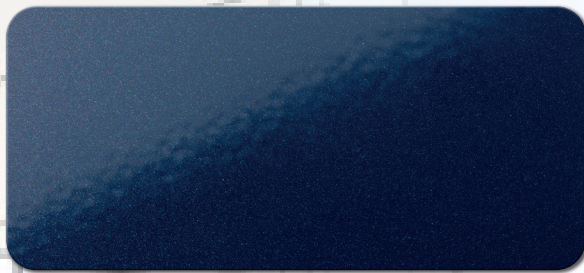
PF1003FRA635
RAL 6035 PERLGRÜN



PF1003FRA636
RAL 6036 PERLOPALGRÜN









PF1003FRA525
RAL 5025 PERLENZIAN



PF1003FRA526
RAL 5026 PERLNACHTBLAU SDGLZ.



PF1001FRA526
RAL 5026 PERLNACHTBLAU MATT

Produktreihe Product range	Oberfläche Surface	Glanzgrad @ 60° Gloss level @ 60°	Einbrennbedingung Baking conditions	GSB GSB	Qualicoat Qualicoat
PF1001	glatt matt Smooth matt	25–35 GE	ab 170 °C from 170 °C		Klasse 1/class 1 P-1191
PF1003	glatt seidenglänzend Smooth satin gloss	65–75 GE	ab 180 °C from 180 °C		Klasse 1/class 1 P-1108
PF1004	glatt glänzend Smooth glossy	75–85 GE	ab 180 °C from 180 °C		Klasse 1/class 1 P-1108
PF2011	matt Feinstruktur hochwetterfest Fine textured matt* Extremely weather-resistant*	5–15 GE	ab 180 °C from 180 °C		
PF2001	glatt matt Smooth matt	25–35 GE	ab 170 °C from 170 °C		Klasse 2/class 2 P-1377
PF 2004	glatt glänzend Smooth glossy	70–90 GE	ab 170 °C from 170 °C		Klasse 2/class 2 P-1469



- Räder
Wheels
- Fahrzeugbau
Vehicle construction
- Maschinen- und Apparatebau
Mechanical engineering
- Lohnbeschichter
Job coaters
- Funktionsmöbel und Lagertechnik
Functional furniture and storage technology
- Bau und Sanitär
Construction and sanitary



FreiLacke | Emil Frei GmbH & Co. KG
Am Bahnhof 6
78199 Bräunlingen-Döggingen

Tel. +49 7707 151-0
Fax +49 7707 151-238

info@freilacke.de
www.freilacke.de